

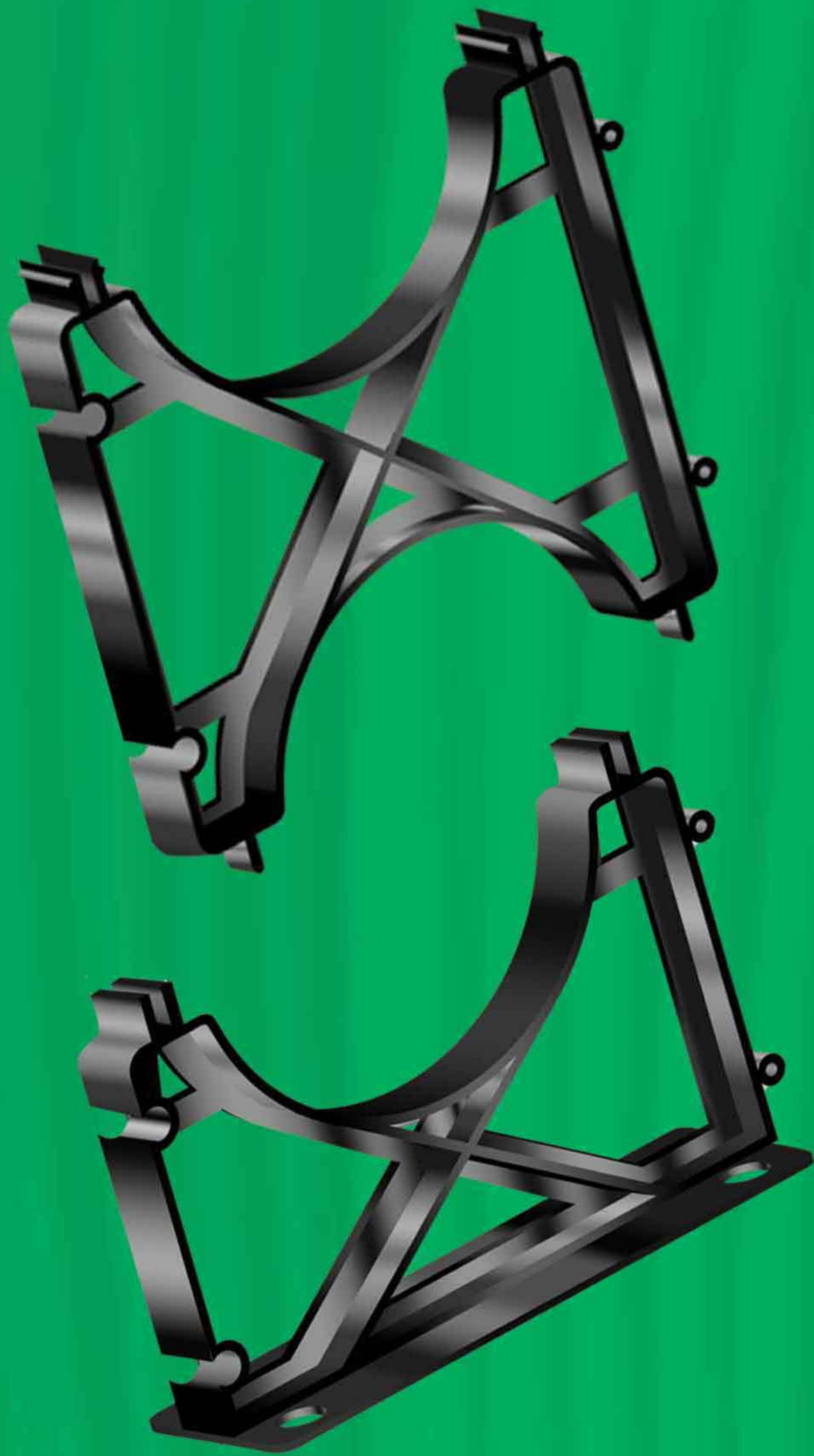
Hi-Impact Utility Duct Spacers

Resistant to Extreme Temperature Fluctuations

Constructed of High Impact Polymers

Available in 16 Sizes & 18 Pre-Assembled Configurations

Snap-Loc Design for Fast Field Assembly



Cal Am Manufacturing's Hi-Impact Utility Duct Spacers have been the choice for contractors for nearly two decades; utilizing a proven two-piece design specifically engineered to support duct arrays within trenching prior to encasement, these sturdy, versatile and light-weight spacers will not shift under the weight of your workmen and stay firmly in place during fill.

Available in sixteen sizes, Cal Am's Utility Duct Spacers can accommodate duct work ranging in size from two to six inches while providing duct separation of 1.5 to 3 inches*. Our spacers are also available in 18 pre-fabricated configurations making them the easiest spacer to install on the market.

Molded from the finest grades of high impact polymers using state-of-the-art manufacturing techniques, these products are highly resistant to extreme temperature fluctuations, U.V. light, are virtually indestructible and offer the consistent lot-to-lot conformity that is a must when accurate duct separation is required.

For over 25 years Cal Am has been providing the Power and Telecommunications industry with the highest quality conduit fittings and supports. For more information on other fine Cal Am products please call or visit our website today at www.calammfg.com.



Virtually Indestructible

Proven Design

No Banding Required

Ensures Accurate Duct Separation

Snap-Loc System
Holds & Secures
Successive Duct Tiers

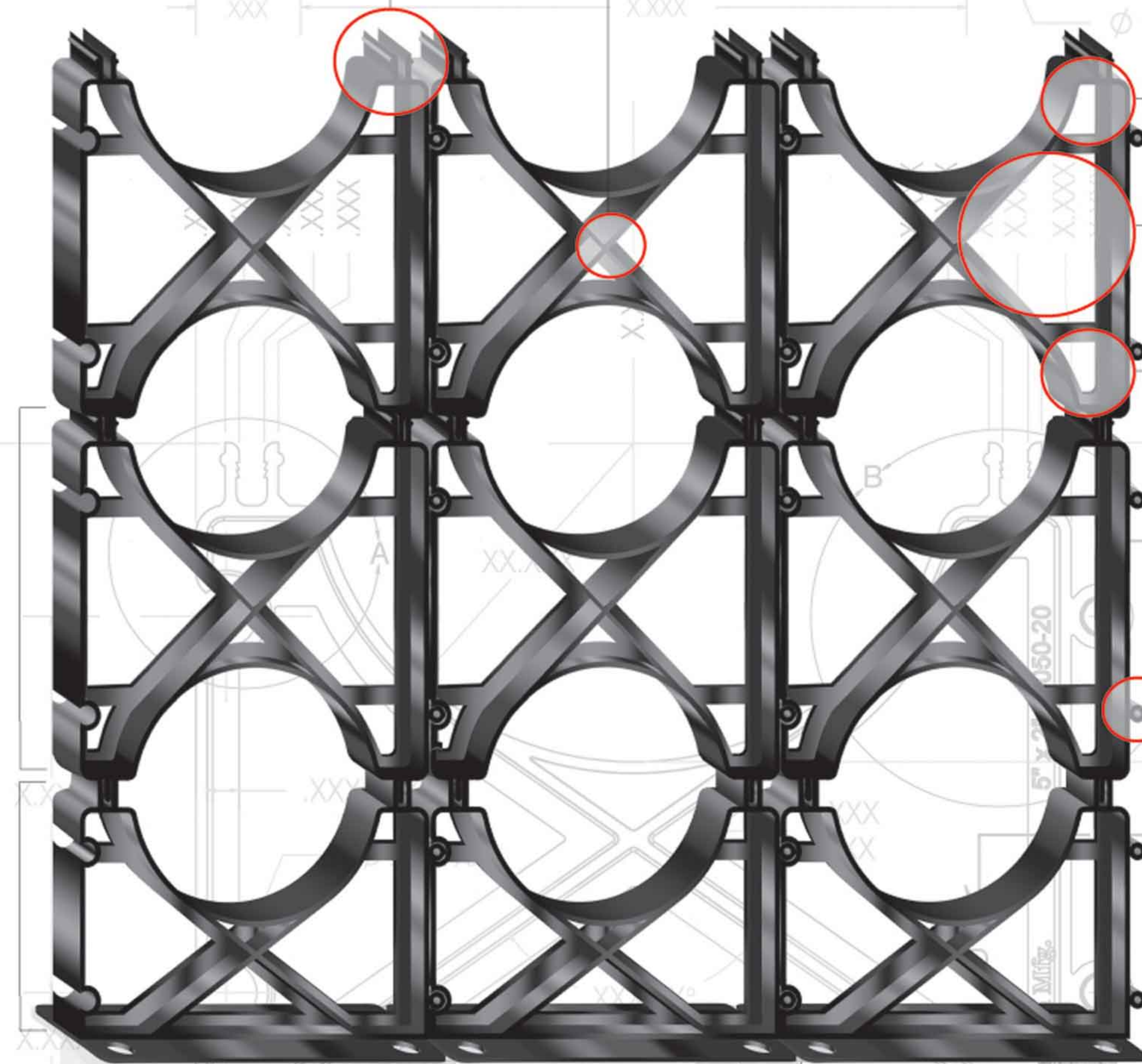
Heavy Duty
Strut Evenly
Distributes Load

Abundant
Through-Holes for
Maximum Fill Flow

Two-Piece
Interlock
Design
Eliminates
Banding

Easy - Slide Side
Locks for Efficient
Horizontal Construction

Proven Base Plate Design
Maintains Consistent
Vertical Separation
Between Trench Floor
and First Duct Tier



SECTION E-E
SCALE 1 : 1

SECTION D-D
SCALE 1 : 1

SECTION C-C

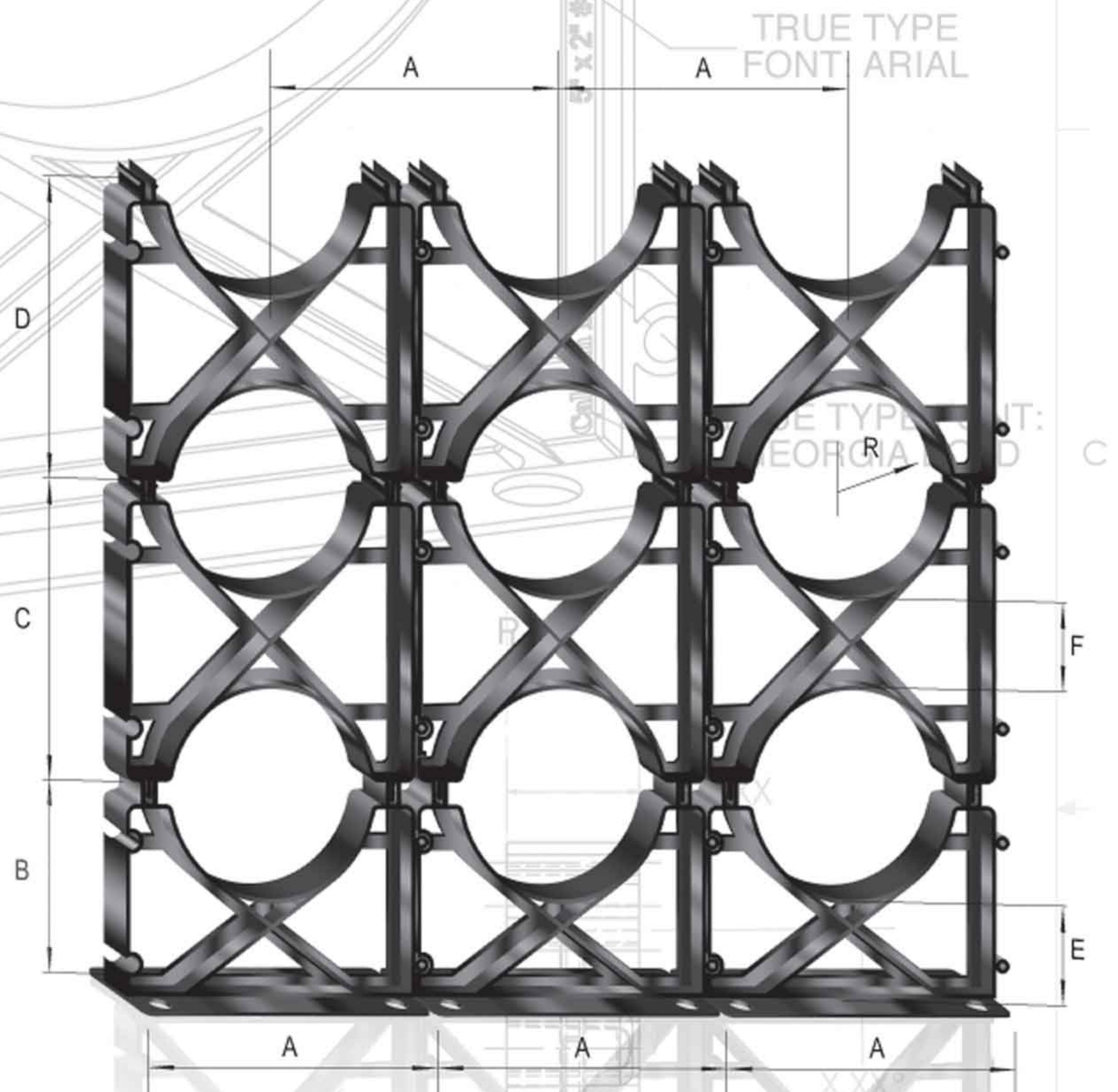
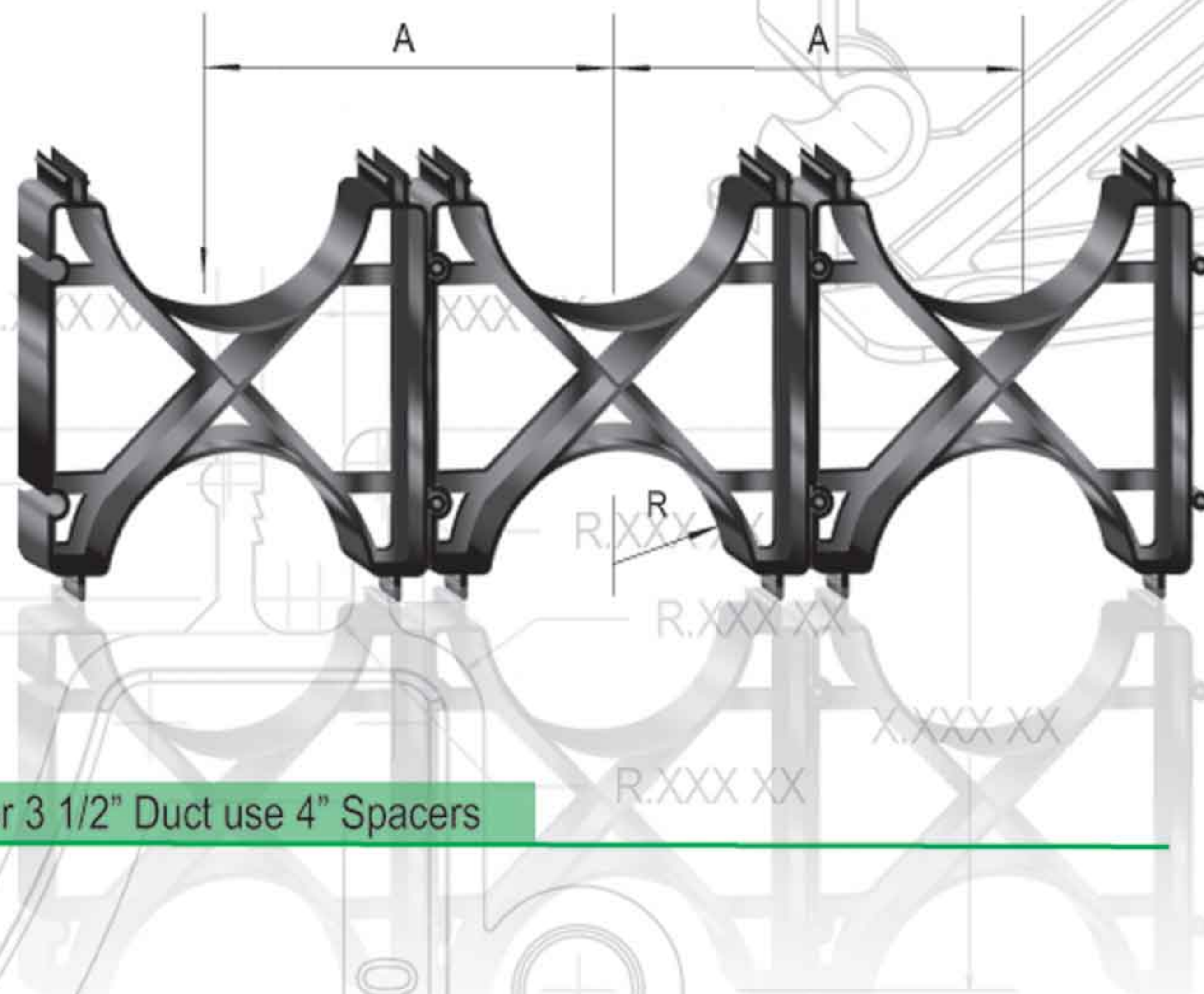
REVISIONS				
ZONE	REV.	DESCRIPTION	DATE	APPROVED
1	A	Resistant to Extreme Temperature Fluctuations		

Constructed of High Impact Polymers

Available in 16 Sizes & 18 Pre-Assembled Configurations

Snap-Loc Design for Fast Field Assembly

* All Base Spacers give a three inch separation between the bottom row of ducts and the trench floor - with the exception of the 4" x 1" spacer which provides a 1 1/4" separation.



DIMENSIONS

SPACER	A	B	C	D	E	F	R
2" X 1 1/2"	3.9750	4.2500	3.9850	2.5000	3.000	1.5000	1.25
2" X 2"	4.4600	4.2500	4.4600	2.5000	3.000	2.0000	1.25
2" X 3"	5.4650	4.2550	5.4600	2.5000	3.000	3.0000	1.25
3" X 1 1/2"	5.1300	4.8150	5.1300	3.6300	3.000	1.5000	1.815
3" X 2"	5.6300	4.8150	5.6300	3.6300	3.000	2.0000	1.815
3" X 3"	6.6300	4.8150	6.6300	3.6300	3.000	3.0000	1.815
4" X 1"	5.6300	4.0600	5.6300	4.6300	3.000	1.0000	2.315
4" X 1 1/2"	6.1300	5.3150	6.1300	4.6300	1.7500	1.5000	2.315
4" X 2"	6.6150	5.3150	6.6300	4.6300	3.000	2.0000	2.315
4" X 3"	7.6150	5.3150	7.6250	4.6300	3.000	3.0000	2.315
5" X 1 1/2"	7.3250	5.9000	7.3250	5.6900	3.000	1.5000	2.845
5" X 2"	7.8330	5.9000	7.8300	5.6900	3.000	2.0000	2.845
5" X 3"	8.6900	5.9000	8.6900	5.6900	3.000	3.0000	2.845
6" X 1 1/2"	8.2300	6.3750	8.2500	6.7500	3.000	1.5000	3.375
6" X 2"	8.7300	6.3750	8.7300	6.7500	3.000	2.0000	3.375
6" X 3"	9.7900	6.3750	9.7500	6.7500	3.000	3.0000	3.375

PROPRIETARY AND CONFIDENTIAL
 THE INFORMATION CONTAINED IN THIS
 DRAWING IS THE SOLE PROPERTY OF
 CAL AM MANUFACTURING. ANY REPRODUCTION
 IN PART OR AS A WHOLE WITHOUT THE WRITTEN PERMISSION
 OF CAL AM MANUFACTURING IS PROHIBITED.



SCALE: 1:1
 SHEET: 1

BASE SPACERS

SIZE	* CATALOG NUMBER	UNIT	QTY PER CASE	CASE DIMENSIONS	CASE WEIGHT
2" x 1-1/2"	4020-15	CS	450	22" x 22" x 18"	59
2" x 2"	4020-20	CS	325	22" x 22" x 18"	47
2" x 3"	4020-30	CS	300	22" x 22" x 18"	52
3" x 1-1/2"	4030-15	CS	250	22" x 22" x 18"	49
3" x 2"	4030-20	CS	225	22" x 22" x 18"	53
3" x 3"	4030-30	CS	190	22" x 22" x 18"	43
4" x 1"	4040-10	CS	250	22" x 22" x 18"	52
4" x 1-1/2"	4040-15	CS	180	22" x 22" x 18"	46
4" x 2"	4040-20	CS	180	22" x 22" x 18"	48
4" x 3"	4040-30	CS	150	22" x 22" x 18"	48
5" x 1-1/2"	4050-15	CS	140	22" x 22" x 18"	45
5" x 2"	4050-20	CS	100	22" x 22" x 18"	32
5" x 3"	4050-30	EA	90	22" x 22" x 18"	30
6" x 1-1/2"	4060-15	CS	100	22" x 22" x 18"	34
6" x 2"	4060-20	CS	100	22" x 22" x 18"	35
6" x 3"	4060-30	CS	90	22" x 22" x 18"	35

INTERMEDIATE SPACERS

SIZE	* CATALOG NUMBER	UNIT	QTY PER CASE	CASE DIMENSIONS	CASE WEIGHT
2" x 1-1/2"	4120-15	CS	500	22" x 22" x 18"	53
2" x 2"	4120-20	CS	325	22" x 22" x 18"	41
2" x 3"	4120-30	CS	275	22" x 22" x 18"	41
3" x 1-1/2"	4130-15	CS	250	22" x 22" x 18"	37
3" x 2"	4130-20	CS	225	22" x 22" x 18"	37
3" x 3"	4130-30	CS	160	22" x 22" x 18"	31
4" x 1"	4140-10	CS	250	22" x 22" x 18"	50
4" x 1-1/2"	4140-15	CS	180	22" x 22" x 18"	38
4" x 2"	4140-20	CS	160	22" x 22" x 18"	39
4" x 3"	4140-30	CS	125	22" x 22" x 18"	36
5" x 1-1/2"	4150-15	CS	140	22" x 22" x 18"	35
5" x 2"	4150-20	CS	100	22" x 22" x 18"	29
5" x 3"	4150-30	CS	90	22" x 22" x 18"	29
6" x 1-1/2"	4160-15	CS	100	22" x 22" x 18"	31
6" x 2"	4160-20	CS	100	22" x 22" x 18"	31
6" x 3"	4160-30	CS	75	22" x 22" x 18"	27
6" TO 4" 4-Way	4264-20	CS			
6" TO 3" 3-Way	4360-30	CS			

* All spacers can be purchased in Pre-assembled configurations, please call for more information.