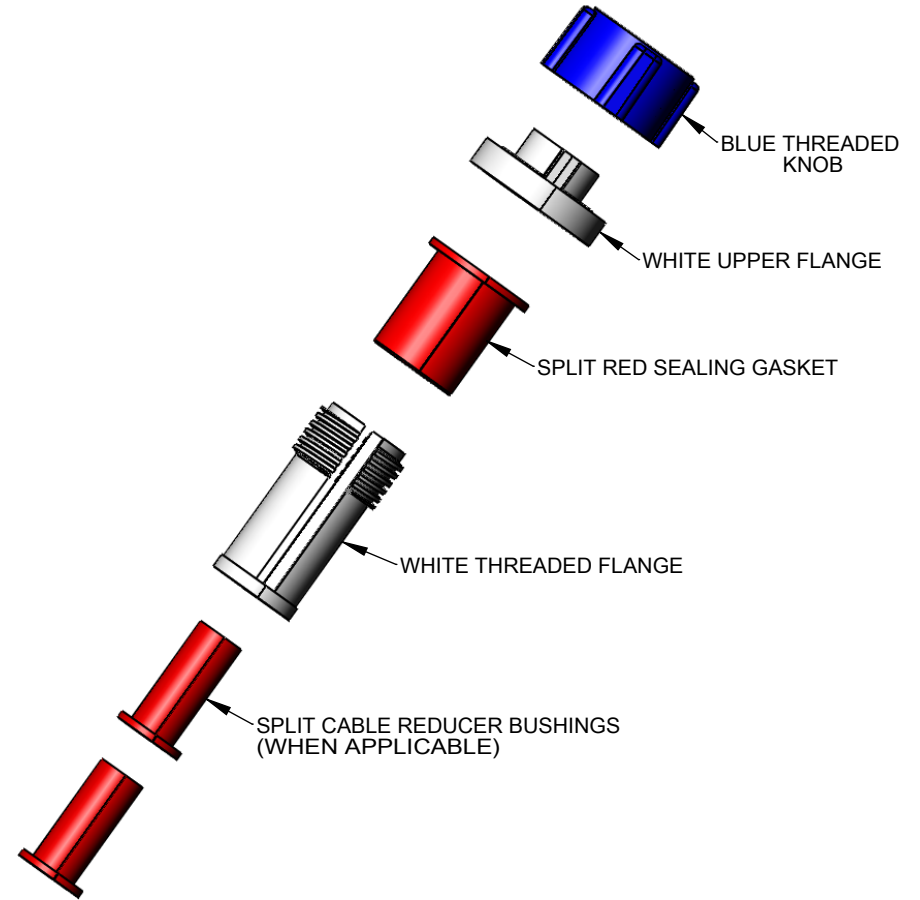
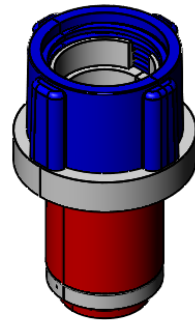
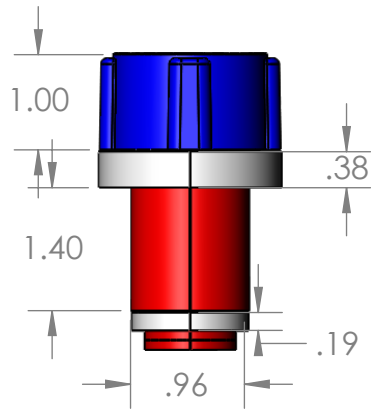


PART NUM	BUSHINGS QTY	DUCT INNER DIAM RANGE	CABLE OR DUCT OUTER DIAM RANGE
7110-027-035	0	1.00"-1.13" (25.4mm-28.70mm)	0.27"-0.35" (6.85mm-8.89mm)
7110-035-057	2		0.35"-0.57" (8.89mm-14.47mm)
7110-051-071	2		0.51"-0.71" (12.95mm-18.03mm)
7111-020-035	1	1.12"-1.23" (28.44mm-31.24mm)	0.20"-0.35" (5.08mm-8.89mm)
7111-035-057	2		0.35"-0.57" (8.89mm-14.47mm)
7111-051-071	2		0.51"-0.71" (12.95mm-18.03mm)

REV	CHANGE	DATE



CONTACT INFORMATION
 PH.619-336-9550
 CUSTOMER SERVICE
sales@calammfg.com
www.calammfg.com

PROPRIETARY AND CONFIDENTIAL
 THE INFORMATION CONTAINED IN THIS DRAWING IS THE SOLE PROPERTY OF CALAM MFG. ANY REPRODUCTION IN PART OR AS A WHOLE WITHOUT THE WRITTEN PERMISSION OF CALAM MFG IS PROHIBITED.

UNLESS OTHERWISE SPECIFIED:
 DIMENSIONS ARE IN INCHES
 TOLERANCES:
 FRACTIONAL ±.5
 ANGULAR: MACH ± BEND ±
 TWO PLACE DECIMAL ±.010
 THREE PLACE DECIMAL ±.005

INTERPRET GEOMETRIC TOLERANCING PER:
 MATERIAL
 NYLON 66, PVC
 AND THERMOPLASTIC ELASTOMER
 FINISH

DO NOT SCALE DRAWING

	NAME	DATE
DRAWN	ROBERTO	2/2/2017
CHECKED	F.GRO.	2/2/2017
	B.A.	2/2/2017
MFG APPR.		
ANN.	INCHES	

COMMENTS:



TITLE: **SIMPLEX WEDGE SEAL™**
1.00"-1.10" 1-WAY

SIZE	DWG. NO.	REV
A	7110-XXX-XXX	A