

# Simplex Wedge Seal™ Cable Termination Plugs

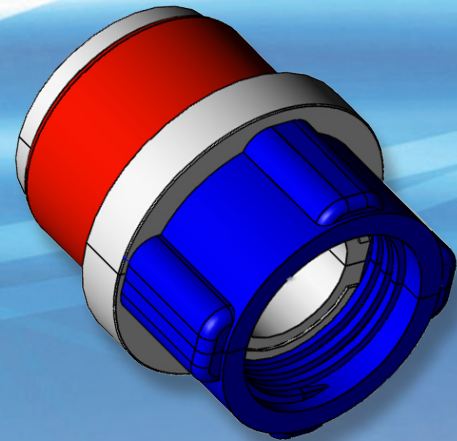


Simplex Wedge Seals™ offer a uniform seal around cables to protect from moisture and debris incursion. We source high quality materials and test our seals in real-world conditions to deliver you a quality product that you can depend on for the long-term.

Cal Am's 25 + years of industry experience gives you confidence that our Simplex Wedge Seals™ will provide an optimum seal, with industry-best lead times. All of our Simplex Wedge Seals™ can easily be installed and removed by hand.

For over 25 years Cal Am Manufacturing has been providing the Power and Telecommunications industry with the highest quality fittings and supports. For more information on other fine Cal Am products please visit our website at [calammfg.com](http://calammfg.com) or contact us with the information below.

- Made of the highest quality materials
- Installs around existing cables
- Available in various cable sealing ranges
- Installs and removes without use of special tools or equipment
- Fast lead-times



## 1" Simplex Wedge Seal

SIMPLEX							
PART NO.	BUSHING(S)	NOMINAL INNER DIAMETER IN)	RANGE (IN)	SIZE	CASE SIZE	WEIGHT	CASE QTY.
7110-027-035	0	1.00" - 1.13"	0.27" - 0.35"	1"	10½" x 8" x 3"	3.5 LBS	20
7110-035-057	2	1.00" - 1.13"	0.35" - 0.57"	1"	10½" x 8" x 3"	3.5 LBS	20
7110-051-071	2	1.00" - 1.13"	0.51" - 0.71"	1"	10½" x 8" x 3"	3.5 LBS	20
7111-020-035	1	1.12" - 1.23"	0.20" - 0.35"	1"	10½" x 8" x 3"	3.5 LBS	20
7111-035-057	2	1.12" - 1.23"	0.35" - 0.57"	1"	10½" x 8" x 3"	3.5 LBS	20
7111-051-071	2	1.12" - 1.23"	0.51" - 0.71"	1"	10½" x 8" x 3"	3.5 LBS	20



# Simplex Wedge Seal™ Cable Termination Plugs



## 1.25" Simplex Wedge Seal

SIMPLEX							
PART NO.	BUSHING(S)	NOMINAL INNER DIAMETER (IN)	RANGE (IN)	SIZE	CASE SIZE	WEIGHT	CASE QTY.
7112-035-057	2	1.22" - 1.36"	0.35" - 0.57"	1.25"	10½" x 8" x 3"	3.5 LBS	20
7112-051-071	2	1.22" - 1.36"	0.51" - 0.71"	1.25"	10½" x 8" x 3"	3.5 LBS	20
7112-071-084	1	1.22" - 1.36"	0.71" - 0.84"	1.25"	10½" x 8" x 3"	3.5 LBS	20

## 1.375" Simplex Wedge Seal

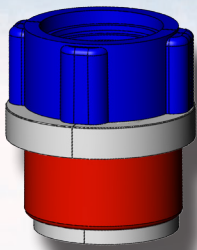
SIMPLEX							
PART NO.	BUSHING(S)	NOMINAL INNER DIAMETER (IN)	RANGE (IN)	SIZE	CASE SIZE	WEIGHT	CASE QTY.
7113-012-043	2	1.37" - 1.50"	0.12" - 0.43"	1.375"	10½" x 8" x 3"	3.5 LBS	20
7113-035-057	2	1.37" - 1.50"	0.35" - 0.57"	1.375"	10½" x 8" x 3"	3.5 LBS	20
7113-051-071	2	1.37" - 1.50"	0.51" - 0.71"	1.375"	10½" x 8" x 3"	3.5 LBS	20

## 1.5" Simplex Wedge Seal

SIMPLEX							
PART NO.	BUSHING(S)	NOMINAL INNER DIAMETER (IN)	RANGE (IN)	SIZE	CASE SIZE	WEIGHT	CASE QTY.
7115-008-035	2	1.46" - 1.56"	0.08" - 0.35"	1.5"	11½" x 8⅝" x 3"	5 LBS	20
7115-035-057	2	1.46" - 1.56"	0.35" - 0.57"	1.5"	11½" x 8⅝" x 3"	5 LBS	20
7115-051-071	2	1.46" - 1.56"	0.51" - 0.71"	1.5"	11½" x 8⅝" x 3"	5 LBS	20
7116-051-071	2	1.56" - 1.70"	0.51" - 0.71"	1.5"	11½" x 8⅝" x 3"	5 LBS	20
7116-071-090	2	1.56" - 1.70"	0.71" - 0.90"	1.5"	11½" x 8⅝" x 3"	5 LBS	20

## 2" Simplex Wedge Seal

SIMPLEX							
PART NO.	BUSHING(S)	NOMINAL INNER DIAMETER (IN)	RANGE (IN)	SIZE	CASE SIZE	WEIGHT	CASE QTY.
7120-008-014	0	1.87" - 2.06"	0.08" - 0.14"	2"	13" x 9½" x 3"	5 LBS	20
7120-015-024	1	1.87" - 2.06"	0.15" - 0.24"	2"	13" x 9½" x 3"	6 LBS	20
7120-025-051	3	1.87" - 2.06"	0.25" - 0.51"	2"	13" x 9½" x 3"	6 LBS	20
7120-052-075	3	1.87" - 2.06"	0.52" - 0.75"	2"	13" x 9½" x 3"	6 LBS	20
7120-076-100	3	1.87" - 2.06"	0.76" - 1.00"	2"	13" x 9½" x 3"	6 LBS	20



**CAL AM**  
MANUFACTURING

Underground Electrical & Broadband Fittings

